



ABOUT THE MUSEUM

The General George Patton Museum of Leadership is the U.S. Army's only museum dedicated to the history of Army leadership at all levels and ranks. It operated as the Patton Museum of Cavalry and Armor from 1949 to 2010, when it began its new mission.

Today's museum devotes 30,000 sq. ft. to exhibits featuring the famous General George S. Patton, Jr. collection and to Army leadership through history from 1775 to the present. The museum also features exhibits on peacetime operations, training, and recruiting. Outdoor exhibits include several historic armored vehicles, the Armor Memorial Park, and a restored WWII barracks.

For the latest news about the museum and its exhibits, visit www.generalpatton.org and www.facebook.com/pattonmuseum.

MISSION AND PURPOSE

The General George Patton Museum of Leadership inspires soldiers, cadets, leaders, and visitors to explore and think critically about why leadership makes the difference.

The Museum collects, preserves, and interprets Patton artifacts to tell the enduring story of the General's life-long study of history and human character and how these passions influenced his legendary leadership style. Additional artifacts preserve and interpret the history and heritage of the Reserve Officer Training Corp (ROTC) and explore Army leadership at all levels from the Revolutionary War to modern conflicts and peacetime challenges.

ADMISSION

Admission to the General George Patton Museum is free. The museum is open to the public.

CONTACT

DIRECTOR

General George Patton Museum of leadership
4554 Fayette Avenue
Fort Knox, Kentucky 40121-0208

GENERAL INFORMATION

502.624.3812

HOURS

Tuesday-Friday

10:00 am to 4:30 pm EST

Closed all Sundays and Mondays

SATURDAY & FEDERAL HOLIDAYS*

10:00 am to 5:30 pm EST

*that do not fall on Sunday or Monday

ACCESS AND PARKING

Visitors may access the Patton Museum by entering the Fort Knox Army Post through the Chaffee Gate via the Bullion Boulevard East exit from 31W. All adult visitors must show a valid photo ID. Follow signs to the Patton Museum. Parking is free.



BEGIN YOUR TOUR

You can use this QR code to download the Patton Museum app. The app provides information about the museum, a map of the spaces, tools to interact with exhibits, the ability to test your leadership skills and much more. Enhance your visit today by downloading the Patton Museum app using this QR code or at http://www.generalpatton.org/app/museum_app.asp.



GENERAL GEORGE PATTON

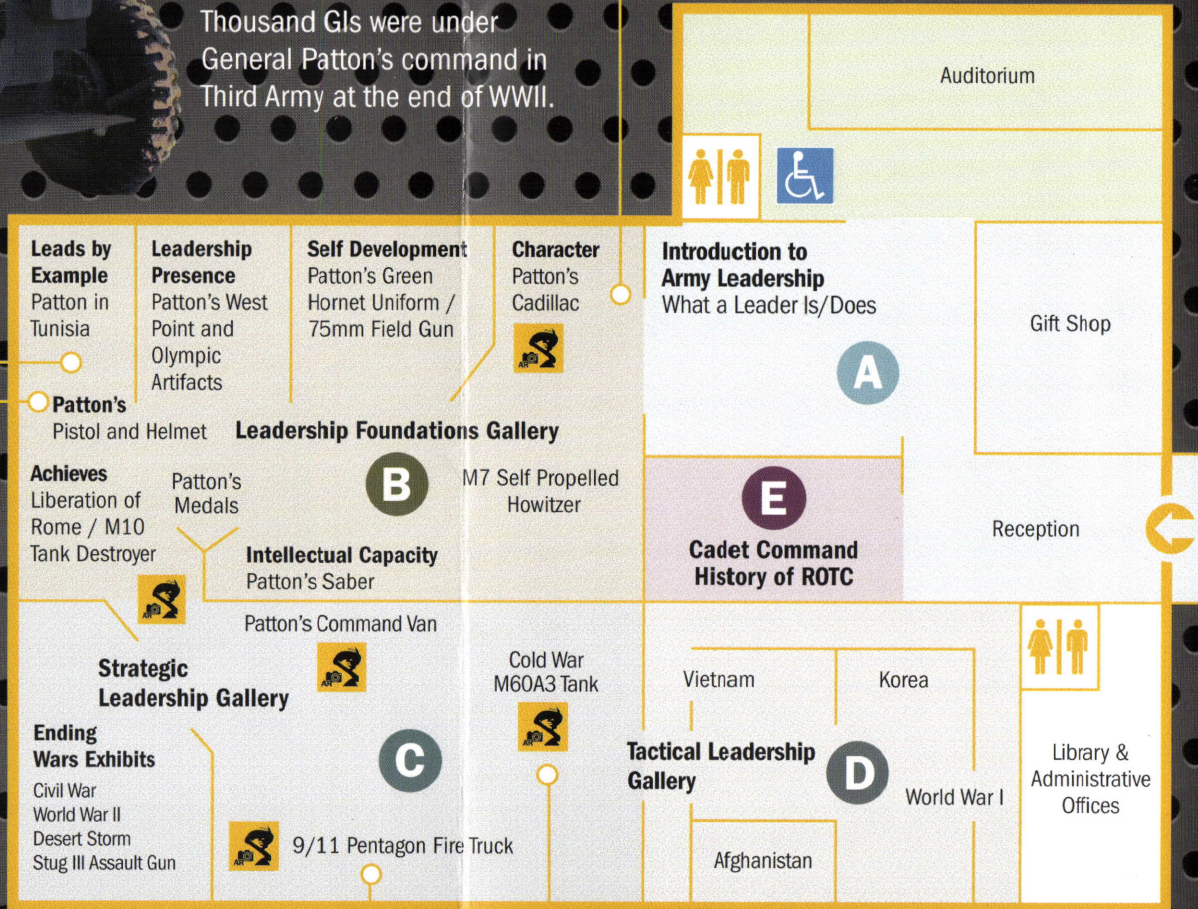
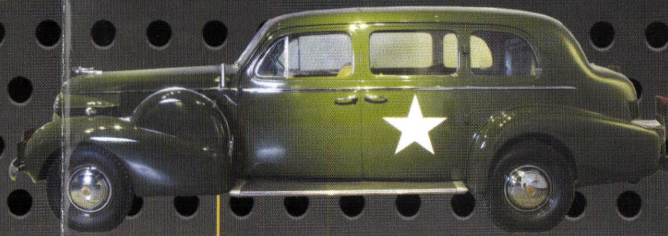
MUSEUM of LEADERSHIP



MUSEUM MAP AND EXHIBITS

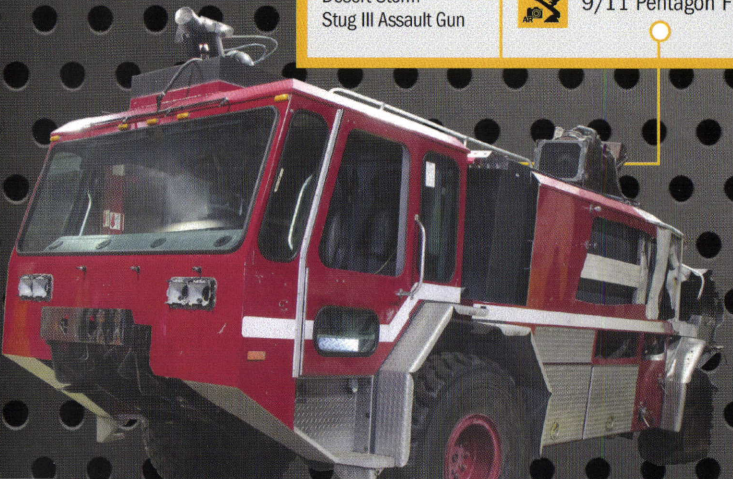
438

Thousand GIs were under General Patton's command in Third Army at the end of WWII.



Map not to scale

3 Firefighters were on duty with 'Foam 161' during the 9/11 Pentagon attack.



53 Tons is the combat weight of the M60A3 tank on display at the Patton Museum.



ABOUT THE EXHIBITS

INTERIOR EXHIBITS

- A THE THREE CHARACTERISTICS AND THREE ATTRIBUTES OF AN ARMY LEADER**
Immerse yourself in the big ideas of leadership: Character, Intelligence, Presence, Develops, Leads, and Achieves.
- B LEADERSHIP FOUNDATIONS**
Explore the six foundations off leadership and learn more about the life of General Patton.
- C LEADING AT THE STRATEGIC LEVEL**
Journey through major events that shaped U.S. history and relive the decisions senior leaders made to meet new challenges.
- D DIRECT LEADERSHIP**
(THIS GALLERY IS TEMPORARILY CLOSED FOR RENOVATIONS)
Go to the front lines and feel what it is like to lead soldiers in combat.
- E LEADERSHIP EXCELLENCE**
Learn more about the history and mission of the Army and the Reserve Officer Training Corps (ROTC).

EXTERIOR EXHIBITS

- WWII BARRACKS**—This fully restored barracks, built in 1941, tells the story of three generations of soldiers who trained at Ft. Knox.
- ARMOR MEMORIAL PARK**—Dedicated in 1990, over 100 monuments pay tribute to armor/cavalry soldiers and units.
- ARMORED VEHICLES AND ARTILLERY**—Restored tanks and other combat vehicles are on display.

ABOUT THE AR MARKERS



Throughout the museum you will see augmented reality markers like the one to the left. These markers will allow visitors to access additional information about the artifacts using their smart phones. To start your experience, download the Patton Museum app using the link below or the QR code on the back of this brochure.

http://www.generalpatton.org/app/museum_app.asp